

Volker Kiessling, Jonathan M. Crane, and Lukas K. Tamm. 2006. Transbilayer effects of raft-like lipid domains in asymmetric planar bilayers measured by single molecule tracking. *Biophys. J.* 91:3313–3326.

Fig. 3 published in this article was incorrect. The correct figure appears below. The published figure legend was correct and applies to the new figure. Panel *B* of the incorrectly published figure shows bilayers made from POPC instead of bilayers made from bPC, bPE, bPC, and cholesterol in the vesicle-derived top leaflet.

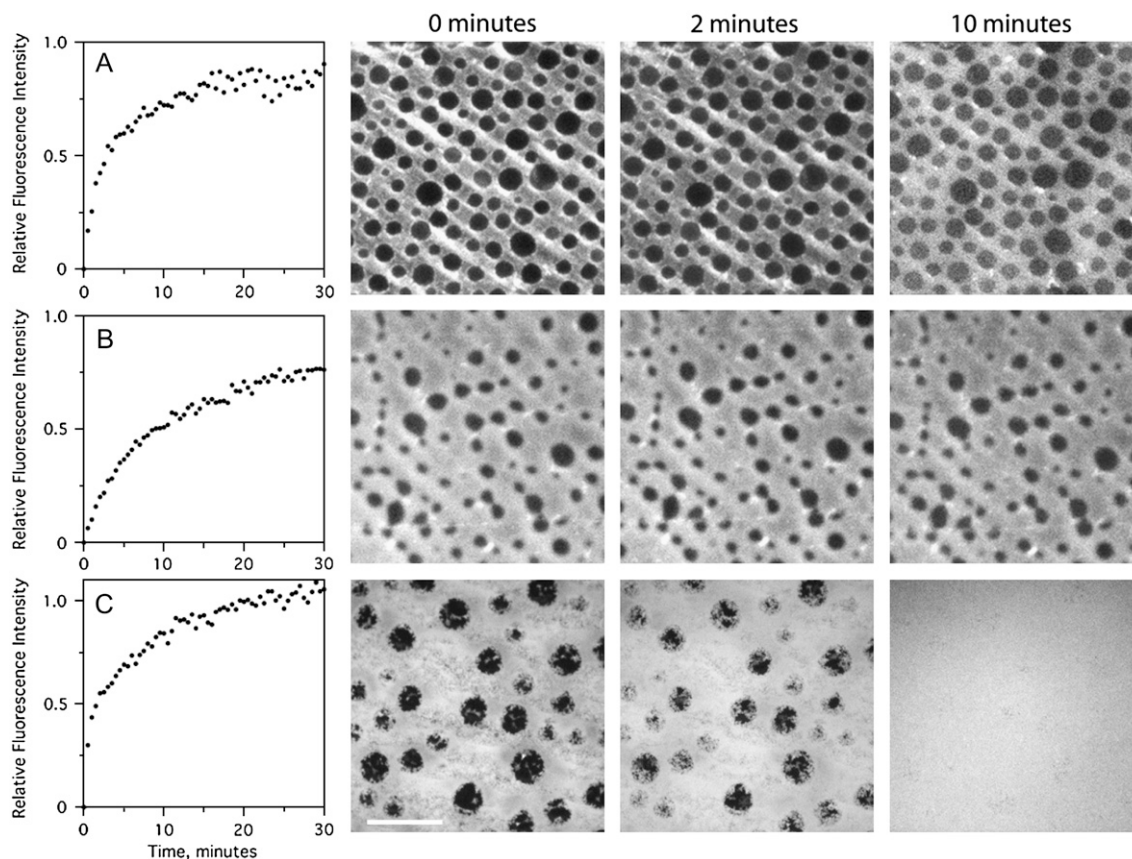


FIGURE 3 Formation of planar supported bilayers containing asymmetric l_o phase domains. Bilayers were made by the LB/VF technique at room temperature. The LB monolayer was composed of bPC/bSM/cholesterol (2:2:1) + 3% DPS (A and B), or without DPS (C). The vesicles contained either POPC + 20% cholesterol (A), bPC, bPE, bPS, and cholesterol (B), or POPC only (C). Formation of the bilayer was monitored by TIRFM with 0.5% Rh-DPPE added to the vesicles only (panels on the left). The stability of the LB monolayer during incubation with vesicles was examined by imaging with 0.5% Rh-DPPE added to the LB monolayer only (micrographs on the right). The white bar represents 20 μm .

doi: 10.1529/biophysj.106.0900153

J. H. Roh, J. E. Curtis, S. Azzam, V. N. Novikov, I. Peral, Z. Chowdhuri, R. B. Gregory, and A. P. Sokolov. 2006. Influence of hydration on the dynamics of lysozyme. *Biophys. J.* 91:2573–2588.

In the legend for Fig. 3, $T \sim 120$ K is incorrect, and should read $T \sim 100$ K.

doi: 10.1529/biophysj.106.0900154